

# Manual E2 – How to Replace Auto Leveling Assembly – V1.0

## Tools:

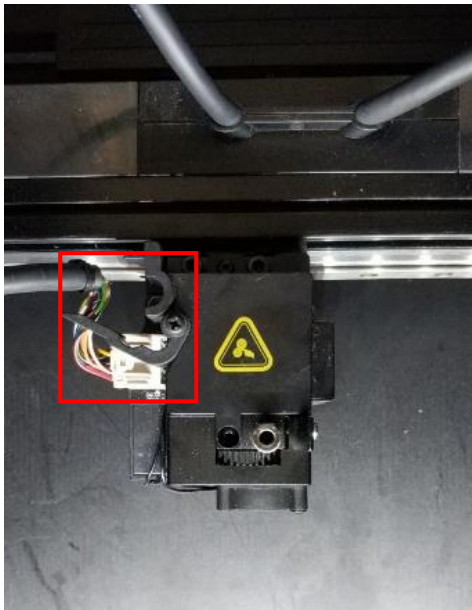
- ① 2mm hex wrench
- ② 3mm hex wrench
- ③ Phillips Screwdriver



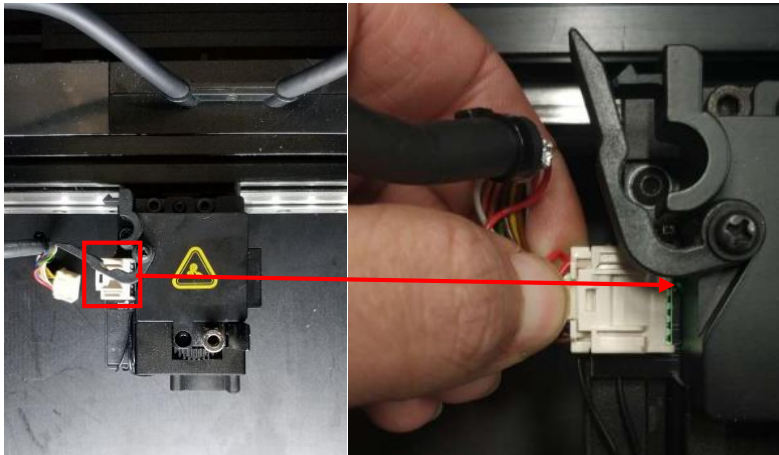
1. Power off the printer.
2. Move the extruder to an accessible location.



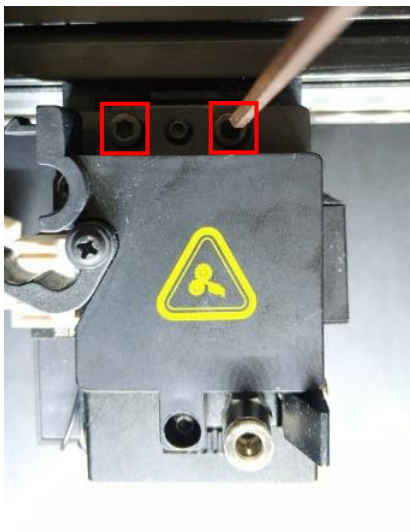
3. Open the belt buckle.



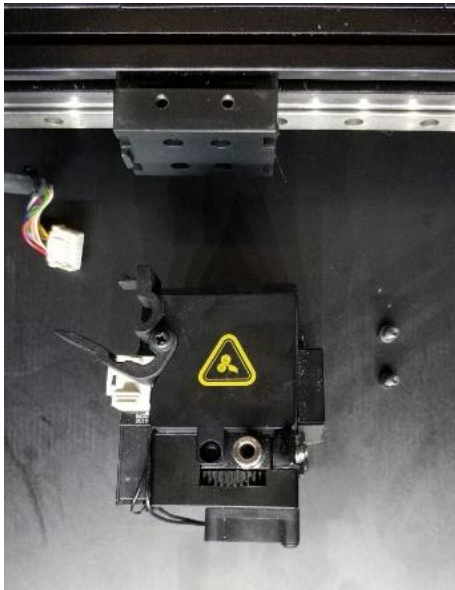
4. Remove the extruder connection cable while pressing on the snap.



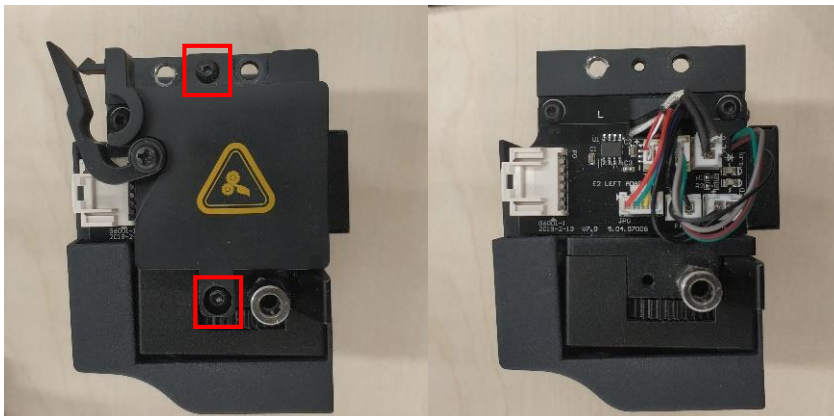
5. Remove the two screws on the extruder with the 3mm hex wrench.



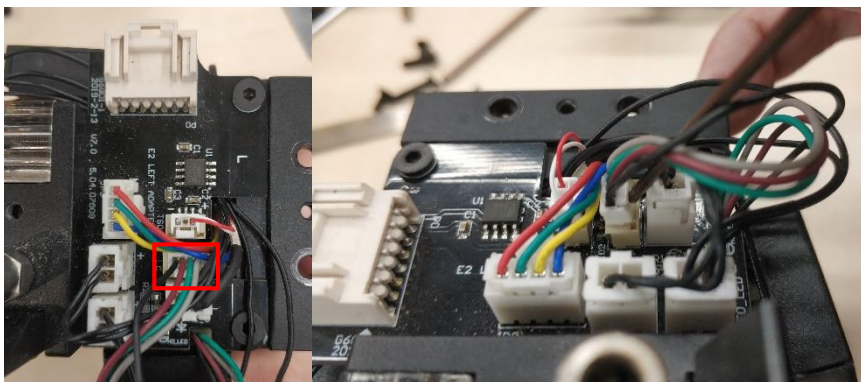
6. Remove the extruder.



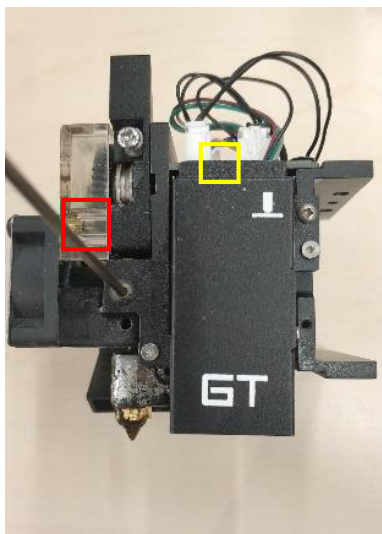
7. Remove the two screws on the extruder cover and then remove the cover.



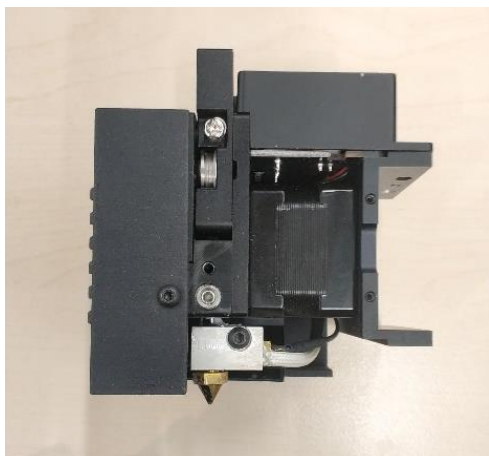
8. Remove the cable marked in red.



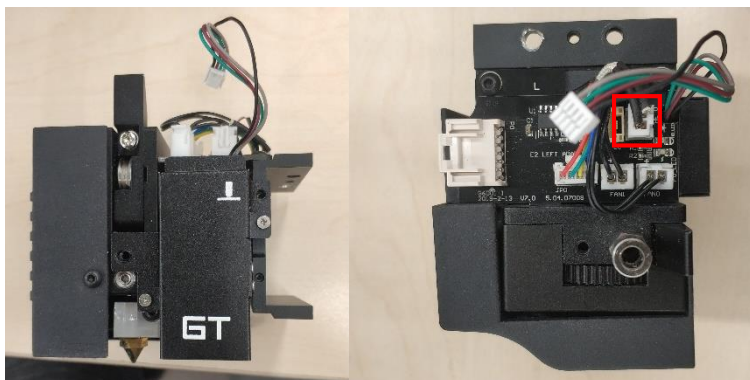
9. Locate the side with the auto-leveling assembly. Remove the screw marked in red with the 2mm hex wrench. Remove the screw marked in yellow with a Phillips screwdriver, then remove the whole auto-leveling assembly.



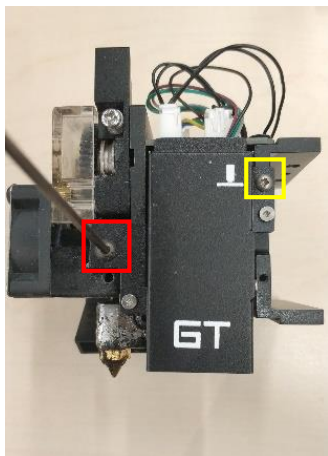
10. Prepare a new extruder.



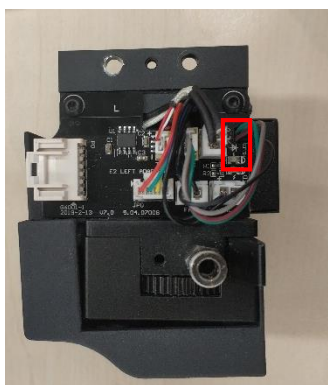
11. Install the auto-leveling assembly in the correct position, align the two screw holes, and insert the cable in the slot.



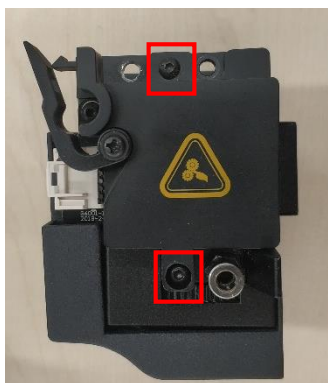
12. Tighten the screw marked in red using the 2mm hex wrench and the screw marked in yellow using the Phillips screwdriver.



13. Insert the auto-leveling assembly cable.



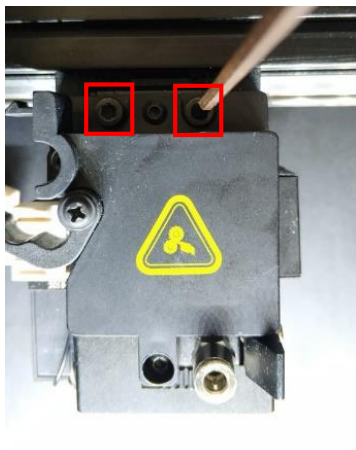
14. Put the extruder cover back on and tighten the two retaining screws.





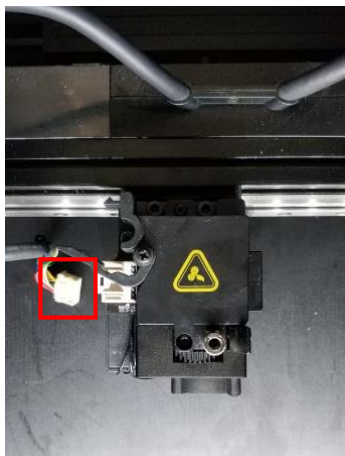
15. Install the extruder back to the X-axis guide rail and secure the extruder with the 3mm hex wrench.

**Note:** When operating this step, please hold the extruder by hand to avoid displacement.

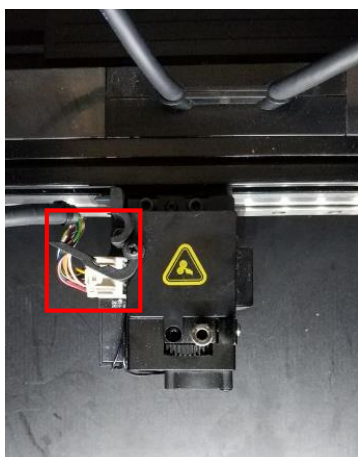


16. Install the extruder connection cable.

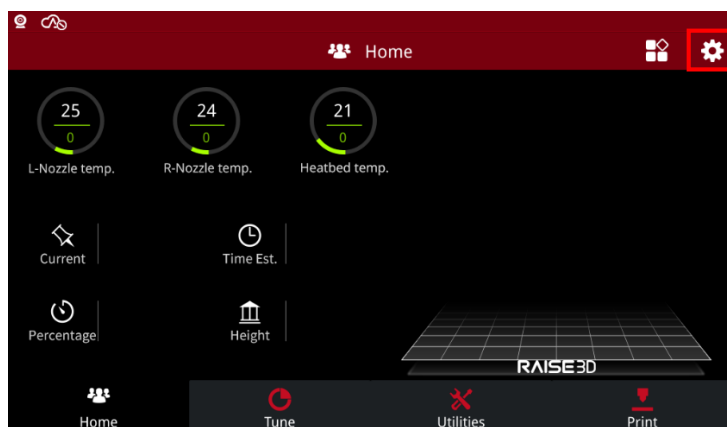
**Note:** Be careful not to remove the ziptie on the cable.



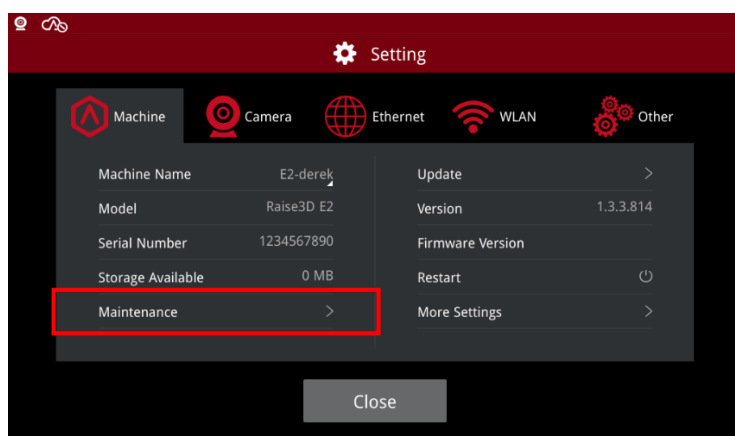
17. Fasten the belt buckle.



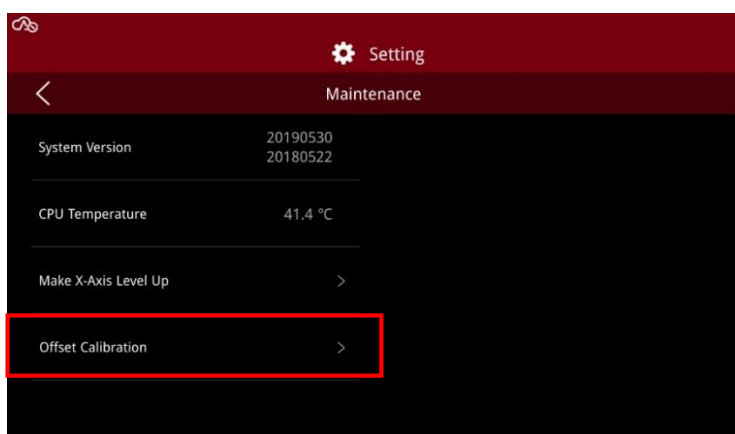
18. After installing the extruder, select the “Setting” icon on the top right-hand side, and run the “Five-Step Wizard” before printing.



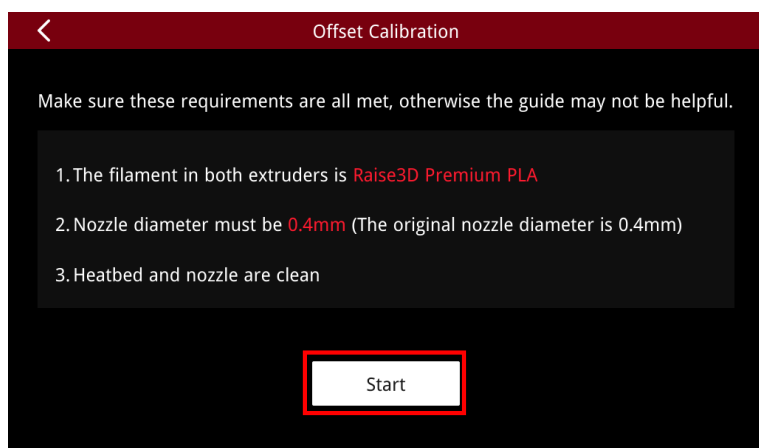
19. Select “Maintenance”.



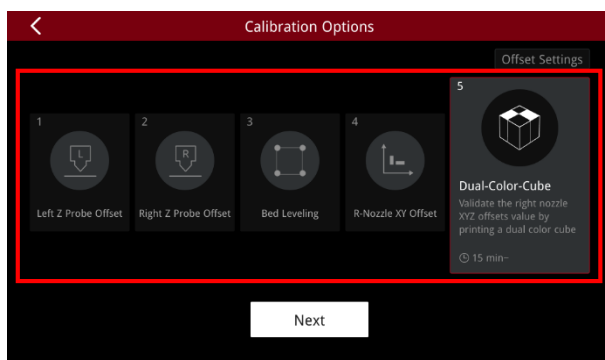
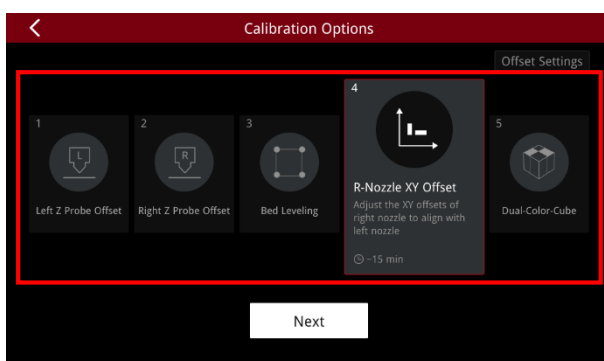
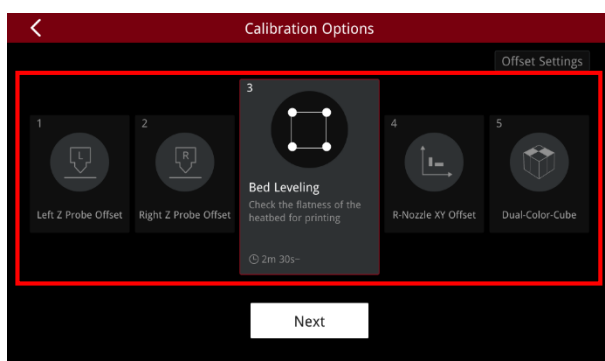
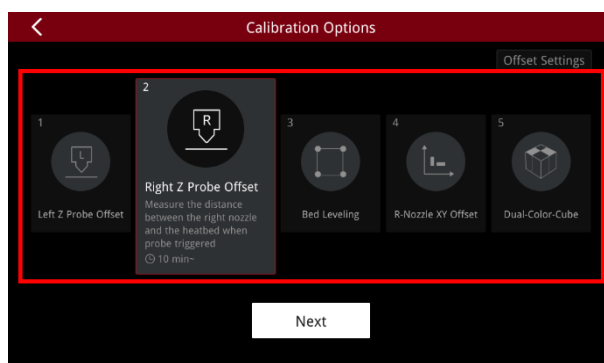
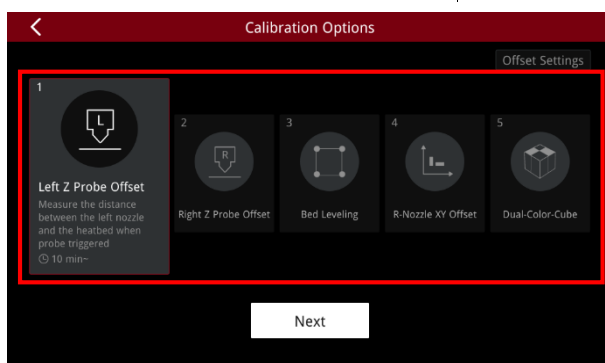
20. Select “Offset Calibration”.



## 21. Select “Start”.



## 22. Run the calibrations and select “Next”.



-End-





---

America | Asia | Europe

Sales & Business: [sales@raise3d.com](mailto:sales@raise3d.com)

Technical Support: [help.raise3d.com](http://help.raise3d.com)

For any other inquiries: [inquiry@raise3d.com](mailto:inquiry@raise3d.com)