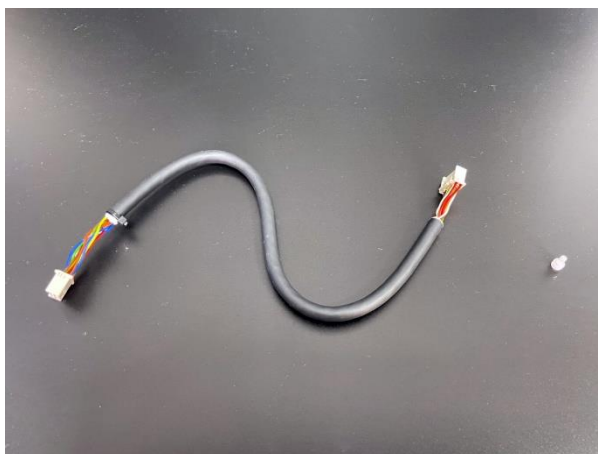
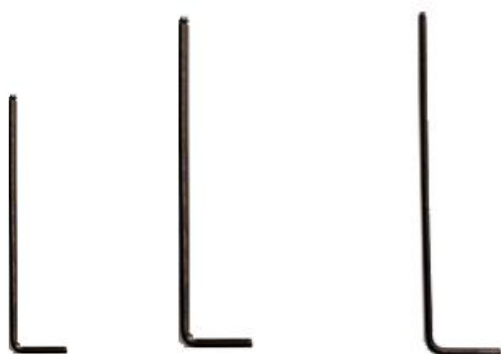


E2 – How to Replace the Extruder Connection Cable

Tools:

- ① 1.5mm hex wrench
- ② 2mm hex wrench
- ③ 2.5mm hex wrench
- ④ Update package (includes 1 Extruder Connection Cable, 1 Nylon M3x8 screw)



A. Unload all filaments from the printer

1. Before replacing the extruder connection cable, unload all the filament from the printer. In this tutorial, we replace the left extruder connection cable as an example to guide users through the process.

B. Replace the extruder connection cable

1. Power off the printer.
2. Open the buckle that retains the left extruder connection cable on the extruder.

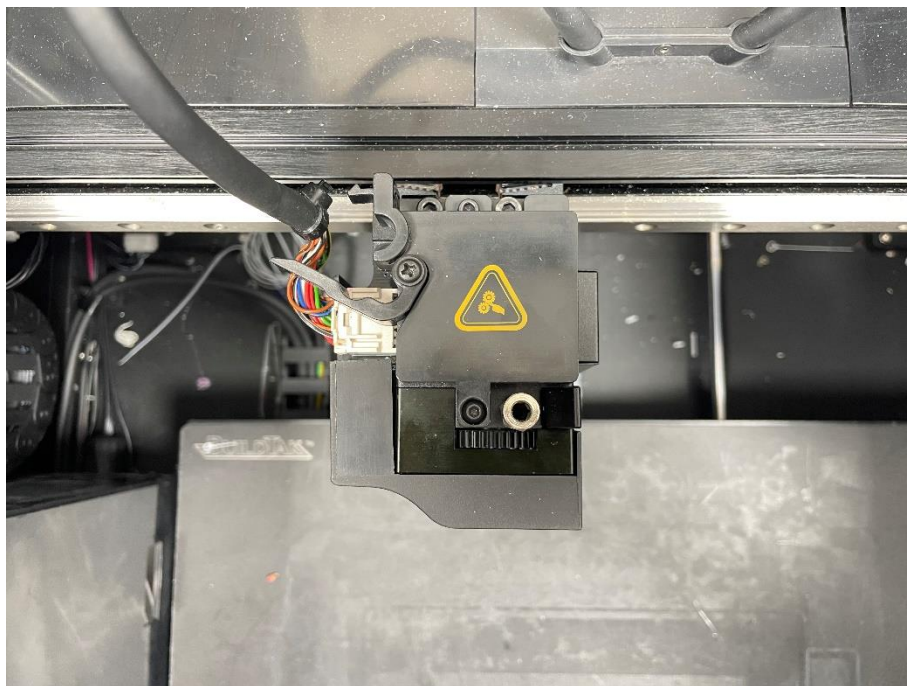


Figure 1 Open the buckle.

3. Press the interface of the left extruder connection cable to unplug it.

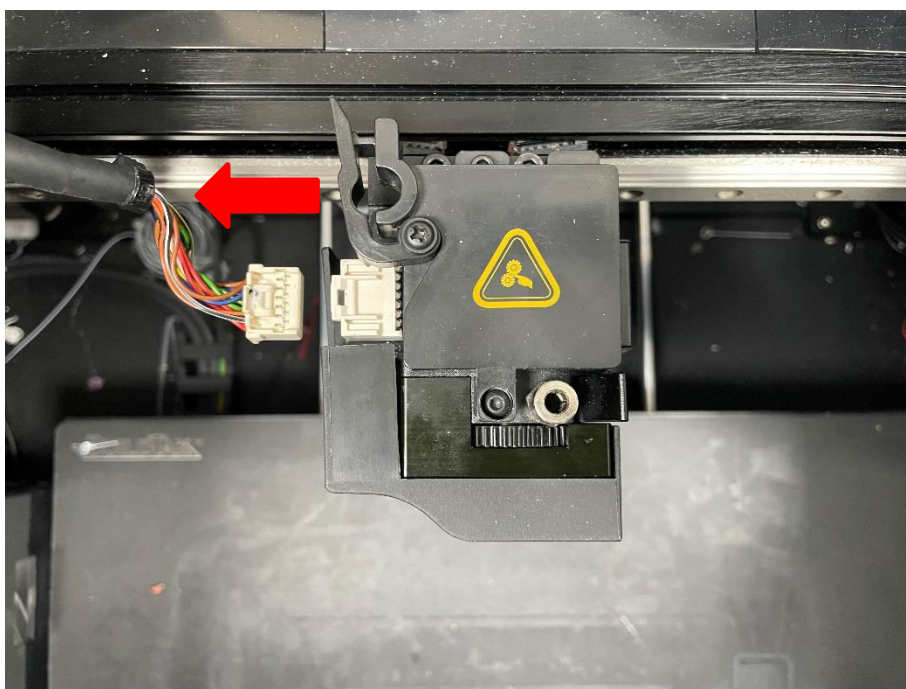


Figure 2 Unplug the left extruder connection cable.

4. Use a 2mm hex wrench to remove 1 securing screw on the extruder.

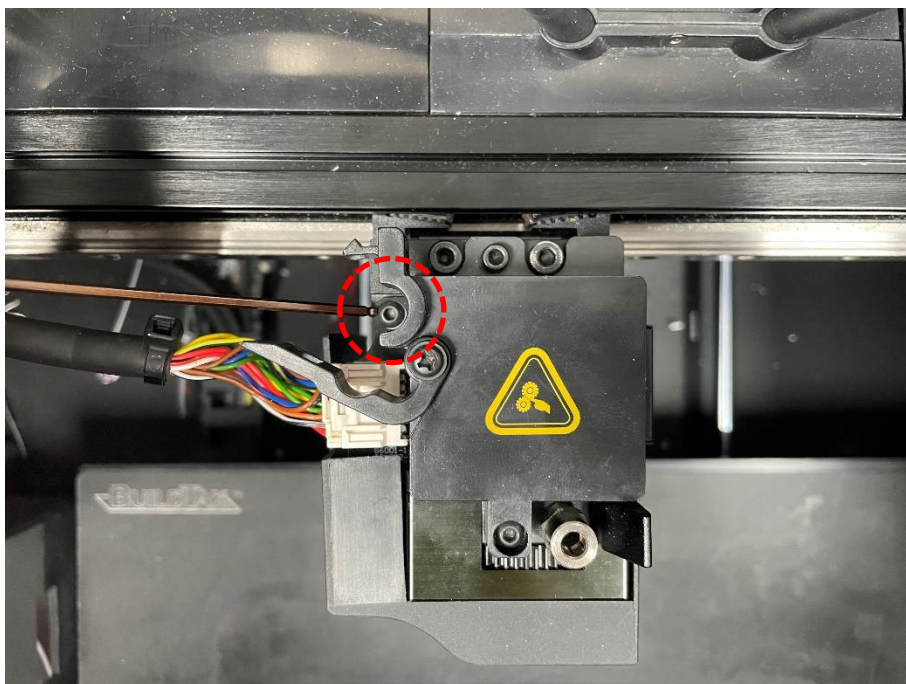


Figure 3 Remove 1 securing screw.

5. Remove 1 screw with a 1.5mm hex wrench on the back cover as shown below.

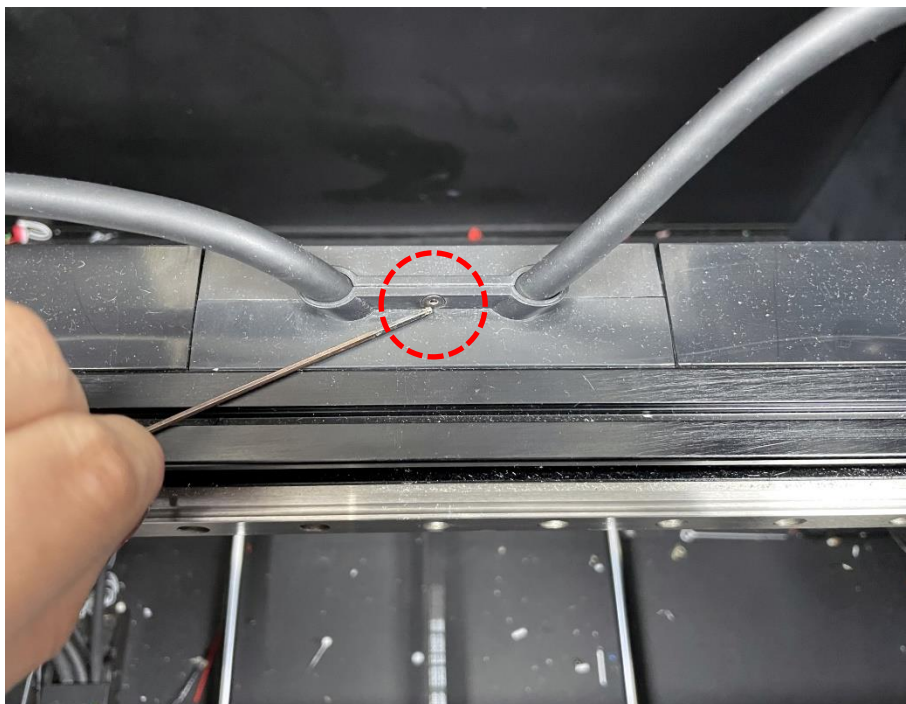


Figure 4 Remove 1 screw on the back cover.

6. Remove the back cover.



Figure 5 Remove the back cover.

7. Remove the old connection cable from the back side.

Note: The position of the left/right connection cable is shown below.

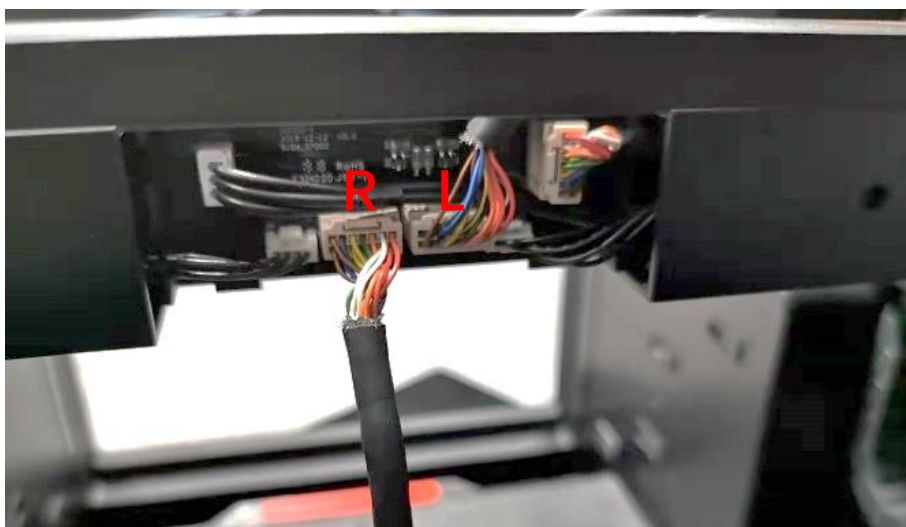


Figure 6 Remove the old connection cable.

C. Install the new extruder connection cable

1. Prepare the new extruder connection cable and 1 nylon M3x8 screw provided in the update package.

Note: A zip tie is at one end of the cable. The cable end with a zip tie connects to the extruder. The end of the cable without the tie connects to the printer.



Figure 1 Prepare the new extruder connection cable and 1 nylon M3x8 screw.

2. The cable end **without** the zip tie connects to the printer.

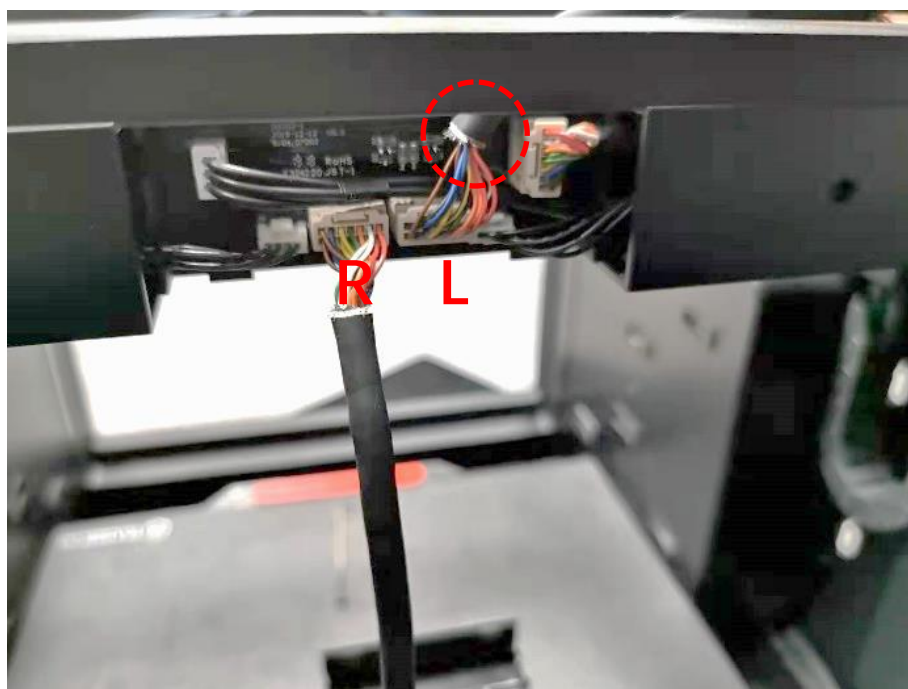


Figure 2 Connect the cable to the printer.

3. Install the back cover.



Figure 3 *Install the back cover.*

4. Install 1 screw with a 1.5mm hex wrench on the back cover as shown below.

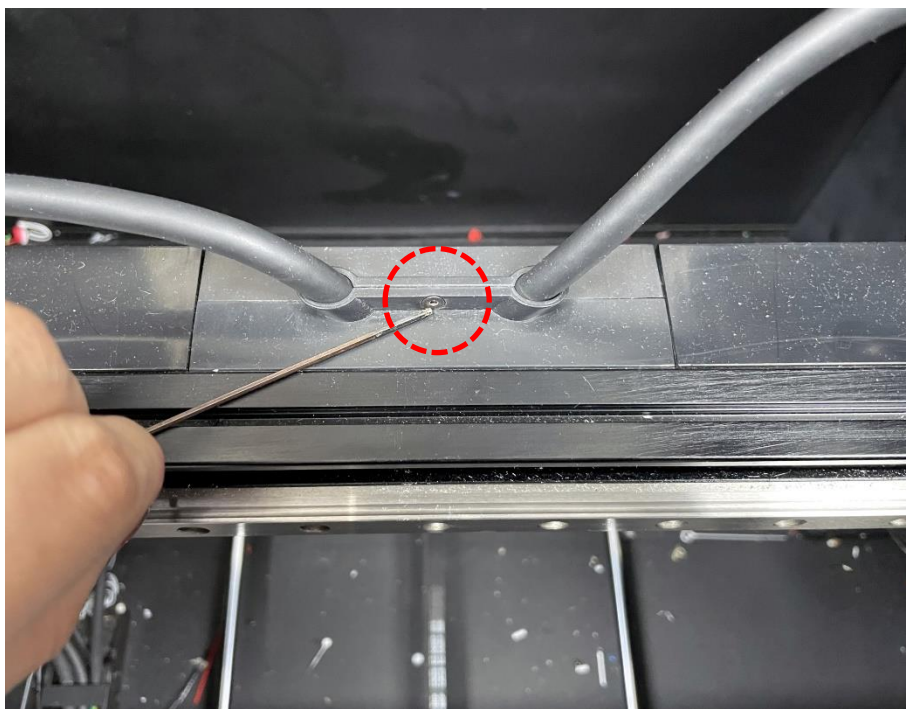


Figure 4 *Install the securing screw.*

5. Connect the end of the cable with the zip tie to the extruder.

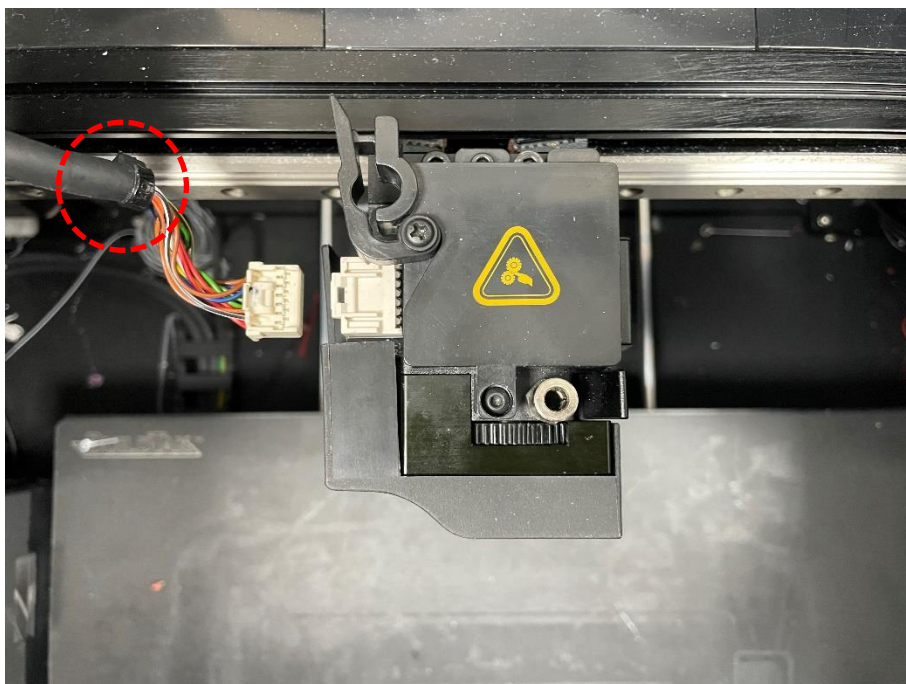


Figure 5 Connect the end of the cable with the zip tie to the extruder.

6. Use a 2.5mm hex wrench to install 1 nylon M3x8 screw to its original position.

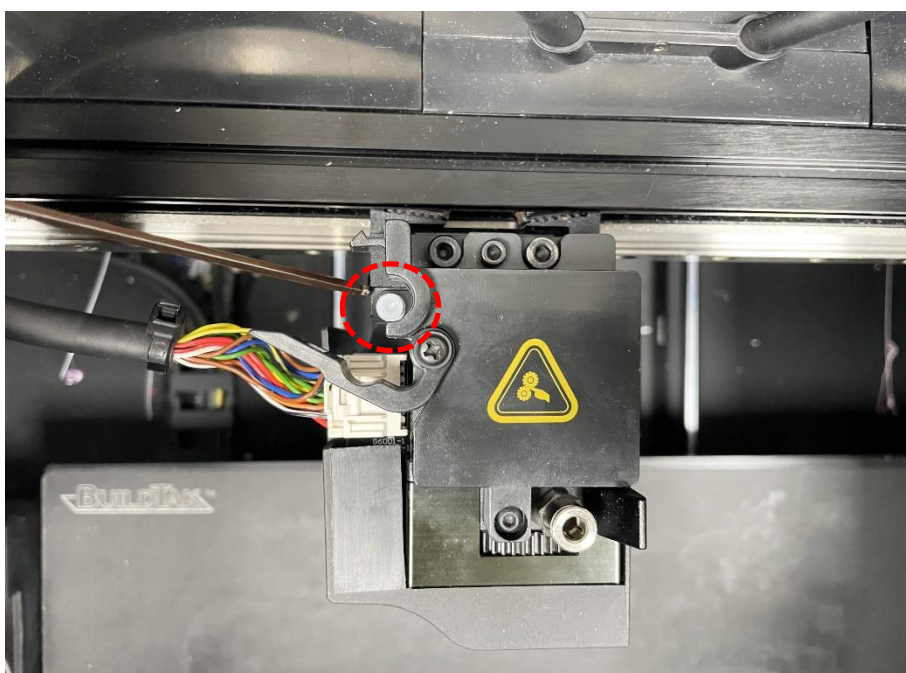


Figure 6 Install 1 nylon M3x8 screw.

7. Put the connection cable into the buckle, and close the buckle.

Note: Do not clip the tie on the cable into the buckle to avoid damaging the cable when closing the buckle.

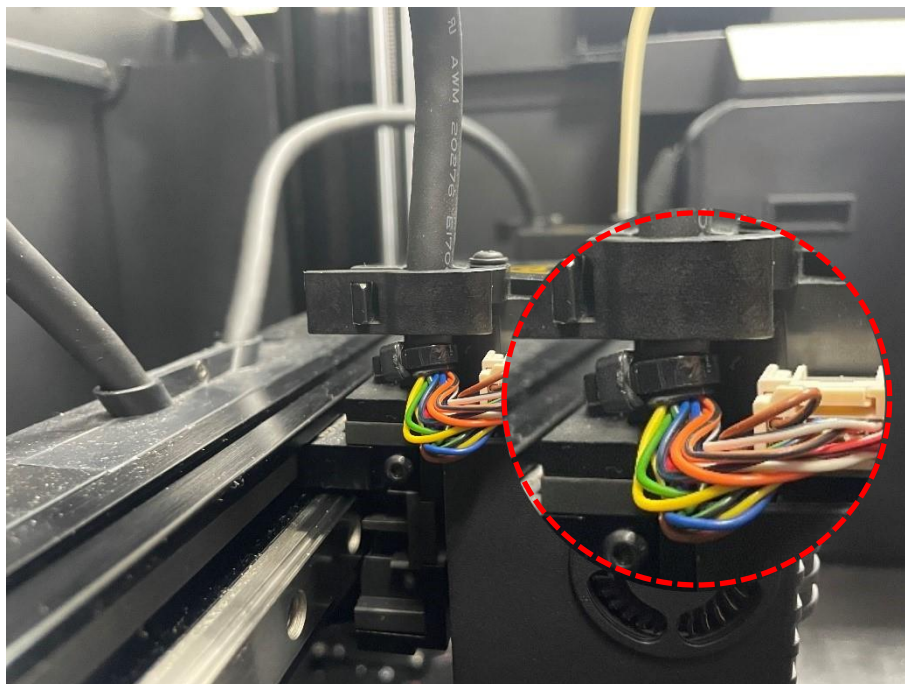


Figure 7 Do not clip the tie on the cable into the buckle.

[12.015-EN.1.1.20220402-How to Replace the Extruder Connection Cable]

-END-



America | Asia | Europe

Sales & Business: sales@raise3d.com

Technical Support: help.raise3d.com

For any other inquiries: inquiry@raise3d.com